



# Makara Peak

Mountain Bike Park Supporters

Annual Report 2014-15





---

**The Makara Peak Mountain Bike Park Supporters are a group of mountain bikers, conservationists, walkers, runners and local residents who act as guardians of Makara Peak Mountain Bike Park - working in partnership with Wellington City Council. Our mission is to create a world-class mountain bike park with dual use (cycling and walking) tracks for all skill levels, in restored native forest.**

Since 1998, Makara Peak Mountain Bike Park volunteers have dug, shifted and compacted soil, chipped out rock, cut back branches, built retaining walls, small bridges and dug drainage channels to create over 40kms of track. We have also planted around 40,000 native trees and continue to eradicate destructive pests (such as possums, goats and stoats) to encourage natural forest generation and increased birdlife.

Makara Peak is unique because it is the first mountain bike park in New Zealand to be developed as a permanent recreational facility in a Scenic Reserve. The summit provides spectacular views of ocean expanse and mountains on both sides of the Cook Strait. Tracks at Makara Peak are generally hand-built to minimise environmental damage - this conservational approach is now used in similar projects around the country.

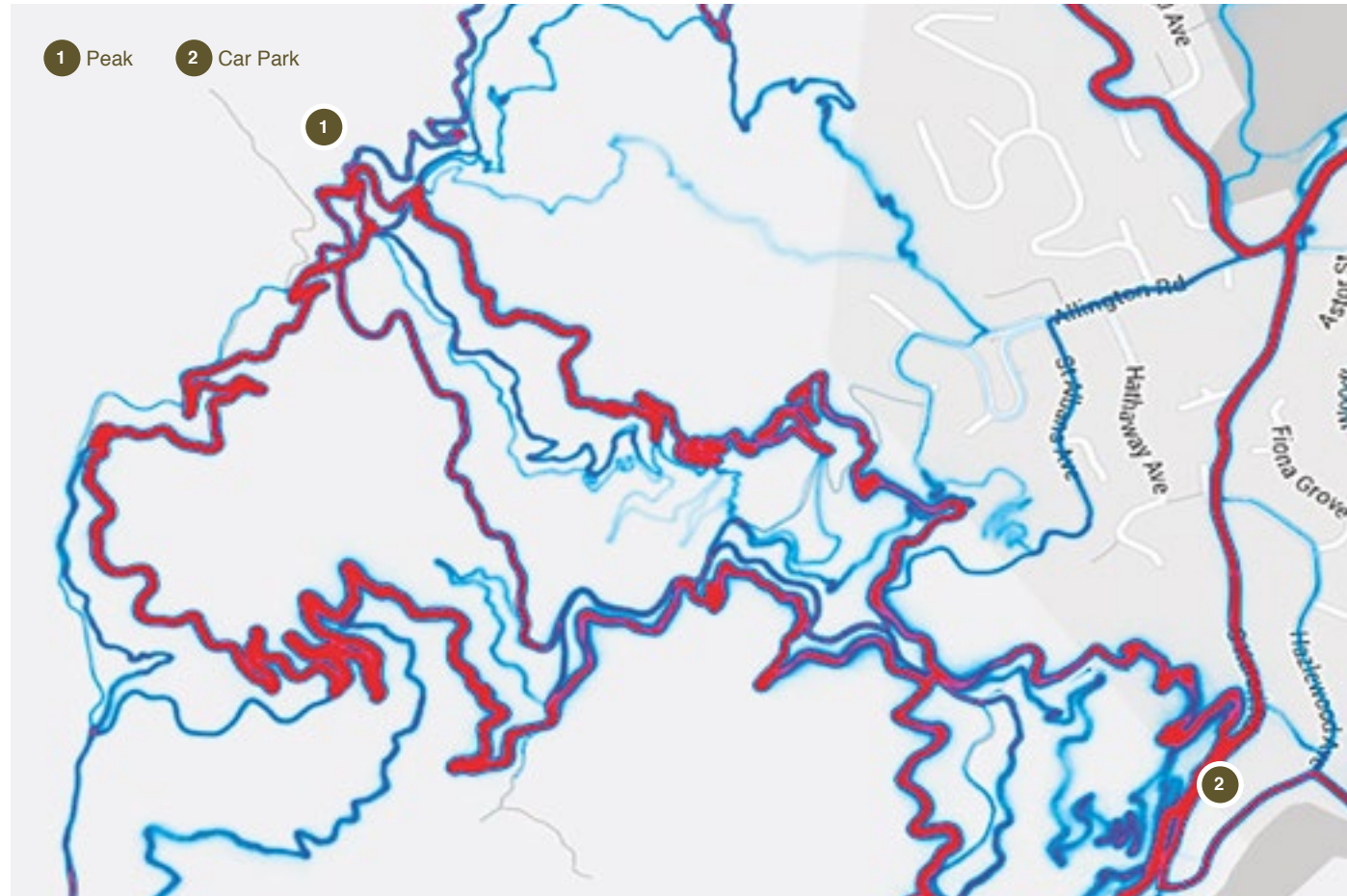




# Who's Been Enjoying The Park?

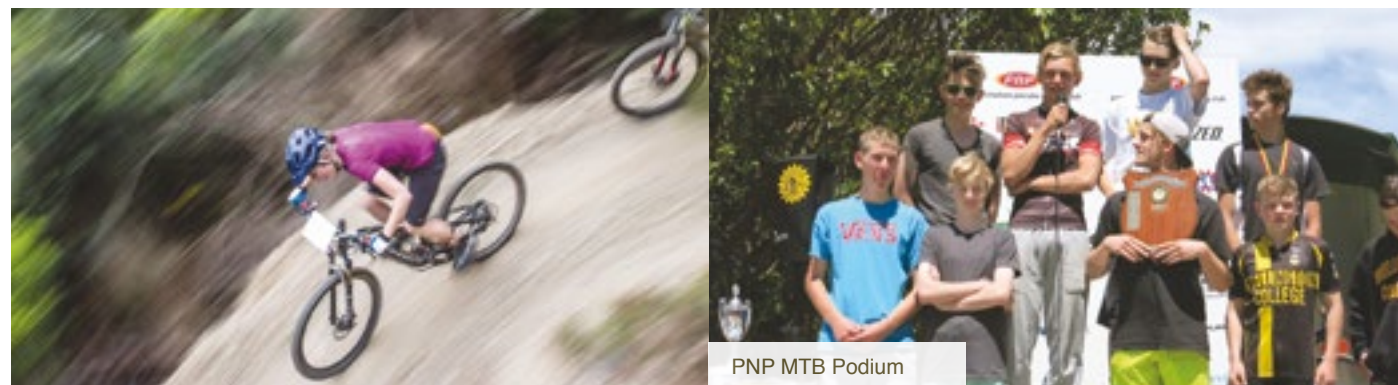
Makara Peak Mountain Bike Park attracts over 80,000 visits to the park each year – including mountain bikers, runners and walkers.

This Strava Heatmap gives us a good indication of which tracks are seeing the most of the action (red indicates the 'hottest', or higher use areas). So, while the Grand Loop (Koru – Sally Alley – Missing Link – Aratihi – North Face – JFK – Smokin' – SWIGG – Starfish) are still very popular, it is great to see that there are plenty of people exploring our new tracks too: Three Brothers, Peak Flow and Bail Out. This map represents rides over the last year so we expect to see that the new tracks will show up more in the future. If you need some help to spot the tracks have a look at the map on the inside back cover.



## Events

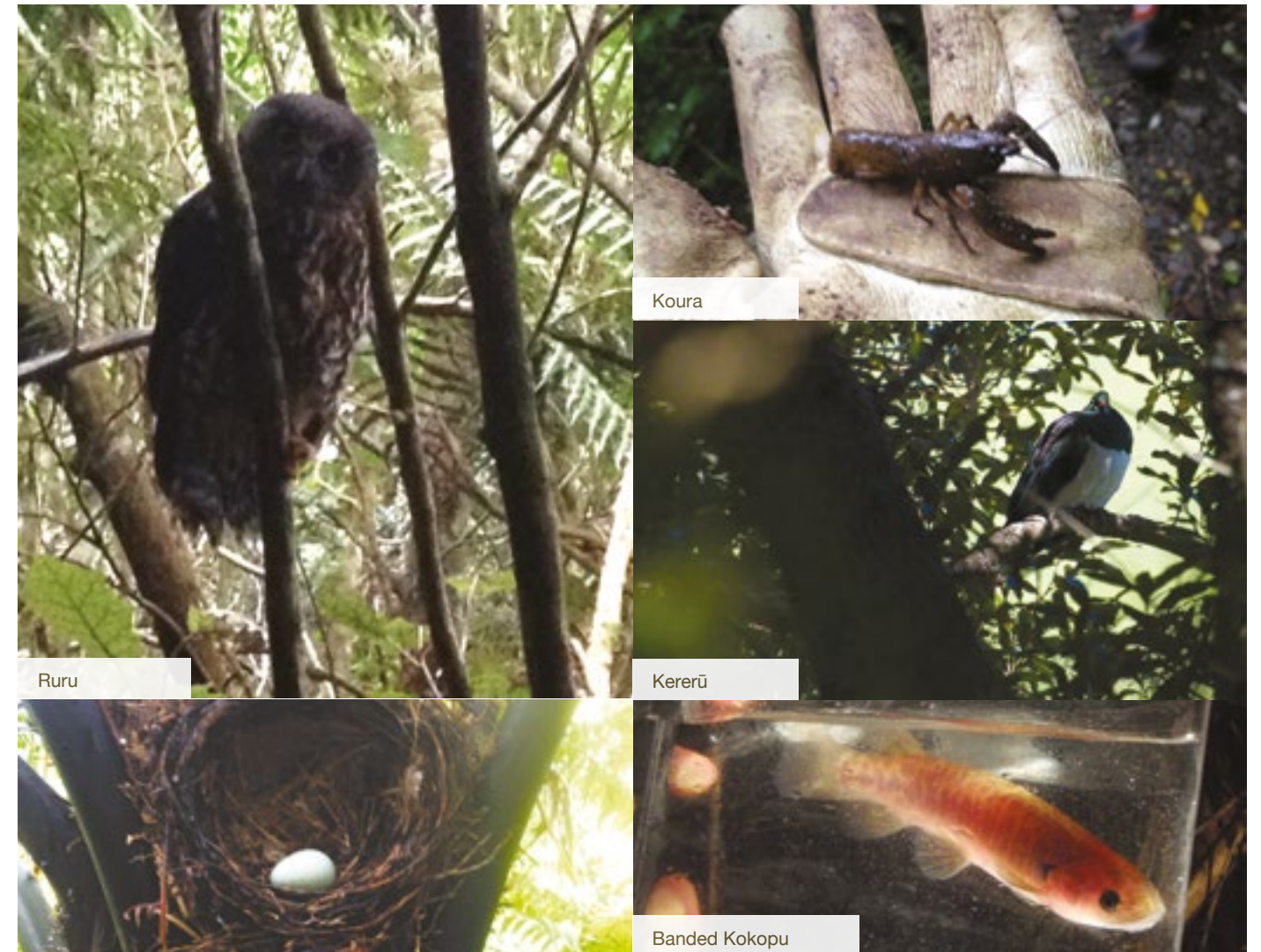
Makara Peak is a popular venue for a variety of races. This year we've hosted the Orienteering Hutt Valley mountain bike orienteering (a 2 hr rogaining event), Women of Dirt (woman's 6 hour mountain bike event), PNP MTB Series events, the Xterra trail run, and the inaugural Tigger Woods EnduroGolf event.



## Our friends in the park

A lot of work goes into regenerating native bush in the park, so we know we're doing something right when we can see of native birds and creatures are hanging out there. This year a very friendly ruru (morepork) has been spotted on Missing Link and a tieke (saddleback) has also been spotted in the park – for the first time in a century, as far as we know. We also have a lot of regular visitors to the park including kererū, kākā, korimako (bellbird), pīwakawaka (fantails), tūi, tauhou (wax eye) and kārearea (NZ Falcon).

The return of kererū was considered a key goal and eventual indicator of success in our 1998 forest regeneration plan, so their return is extra significant. This is a sign of a healthy forest and effective pest control.





# What's New At Makara Peak

This has been a big and exciting year for new additions to the park, while still making sure our existing tracks are maintained to a very high standard.

## New maps and signage

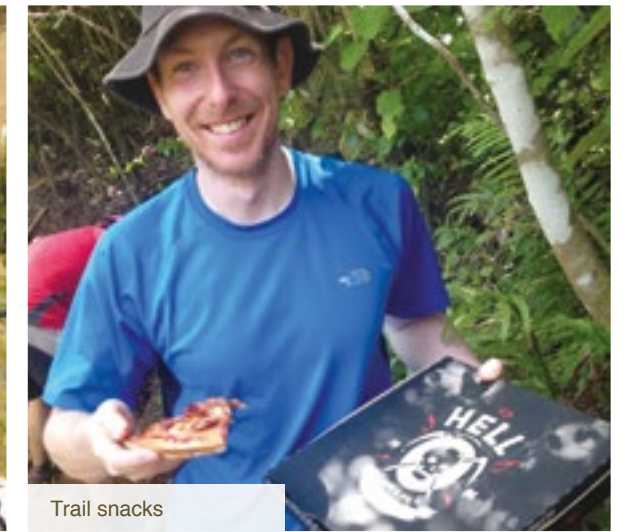
This year we've introduced new maps and signage in the park – which is a key component of a good mountain bike park so people can easily find the tracks at the right grade for them, and enjoy the park without having to stop too often to find their way around. Thanks to Karl Yager for managing this project and to students at Massey University, Wellington City Council, Trail Fund, Deneefe Signing Systems and Concept Sign and Display, we now have 300 new signs and 5 new map boards installed around the park.



One of 5 new map boards



PHOTO: © Oliver Ward



Trail snacks



Kids that dig!



## Keeping awesome tracks awesome

We have weekly work parties throughout the year and also have a number of volunteers that regularly wander into the park to keep on top of things such as vegetation growth, drainage issues and windfall after storms.

Over the last twelve months we've had volunteer work parties on 17 of our tracks: Koru, Sally Alley, Magic Carpet, Lazy Fern, Rimu, Three Brothers (third section), North Face, Ridgeline Extension, JFK, Starfish, SWIGG, Upper Leaping Lizard, Leaping Lizard, Nikau, Bail Out, Livewires and Vertigo.

We've also been able to do some more substantial work on Sally Alley to bring it back closer to a grade 3 track - thank you to a very generous donation from the Johnston Foundation. Thanks to a grant from Meridian Westwind Community Fund we were also able to do some ongoing upgrades to the track surface on our easier tracks.

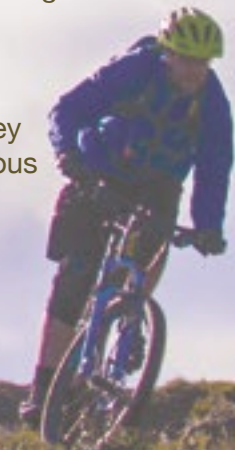


PHOTO: © RicoHeddtPhotography.com



## **Three Brothers track** **(first section)**

The first section of the Three Brothers track (0.6km) was opened in February. The track was named after the Kennett Brothers, founding members of the Makara Peak Supporters who have continued to make a significant contribution to the park over the last 17 years (including the design of this track). Three Brothers track will be entirely cut by hand by volunteers over three summers and will provide an intermediate loop for people that don't want to climb all the way to the summit. The third section was opened earlier in 2014 and the second section is likely to open in early 2016.



Lizard Tail bridge - Work in progress!

## **Bail Out track and Lizard Tail bridge**

The 0.7km Bail Out track was cut by hand by volunteers and opened in October 2014 to provide an exit from the bottom of Leaping Lizard out to South Karori Road. Possum Bait had been the only exit and so this part of the park was becoming less popular. We also added a new sculptured cambered Lizard Tail bridge, designed and built by Simon Kennett (with help from Jon Rosemergy) to help prevent bikes from putting silt into the creek - an important part of the ecological plan for this part of the park.

## **Peak Flow track**

Peak Flow (1.8km) which was officially opened in May by Wellington's Mayor, Celia Wade-Brown. We have Wellington City Council to thank for funding and managing the build of this new machine-built flow track, created by Rotorua based Southstar Trails. The track has been very popular and seems to be drawing bigger crowds to Makara Peak - we are seeing a lot of people at the summit and a stream of people riding back up the 4WD road for more.



Mayor, Celia Wade-Brown opening Peak Flow.



## **Tools at the bike wash**

The bike wash is a great facility to have in the main carpark, and it definitely gets a lot use. Thanks to Wellington City Council we now also have some tools and a permanent track pump for those last minute pre-ride repairs.



# So Much More Than Just A MTB Park

**Makara Peak was cleared of native vegetation in the early 1900s and farmed through to the mid-1990s. Makara Peak Supporters assist in a variety of ways to help restore the area to its natural state, including animal and plant pest control, protecting and reintroducing rare native plant species, and planting thousands of seedlings.**

## Plants

To restore diversity, the Supporters plant important and missing plant species such as kahikatea, miro, matai, rimu, northern rata, tawa, kohekohe, pukatea and kāmahi. These will live for hundreds of years and become important food sources and habitat for native birds, reptiles, insects and bats.

This year, we planted around 1,500 new seedlings – on Hazelwood Green, North West Boundary, Leaping Lizard, A to Z, and along the three news tracks (Bail Out, First Brother and Peak Flow) and along the riparian area (or bank) of Karori Stream near the main car park. We also had a number of work parties to release previously planted seedlings to clear away other growth that may smother them.

**Project Crimson** celebrated 25 years at Government House this year. Makara Peak has been involved since 2000 and they have donated about 100 Northern rata to the park each year. This species will not only add a splash of colour to the Peak – it's flowers are an excellent source of nectar for species like tūī, kākā and korimako.



## Karori Stream Restoration

Karori Stream and surrounding land from the main car park south was a weed-infested grassland, prior to 1999. With the help of grants and thousands of volunteer hours, weeds were cleared and the area was planted out. Follow-up work continues and with a grant this year we've been able to manage weed control on Karori Stream which has been an ongoing project to establish a 'living' stream with a full native eco-system.



**Pests** - The Supporters have set up and continue to maintain a large network of poison bait stations and traps across the park to control possums, stoats, and weasels. There are over 30 dedicated volunteers who regularly check traps and bait stations. The Greater Wellington Regional Council pest animals teams provides expert advice and support for this on going project.



**KATCH 22** - This is the trapping arm of Makara Peak Supporters and has expanded a ring of (stainless) steel around much of Karori's hills since early 2014. We use DOC200 traps to protect our native birds against our nastiest predators such as rats, stoats, weasels and hedgehogs – during this year activity has increased up to 165 traps around the park and surrounding area.



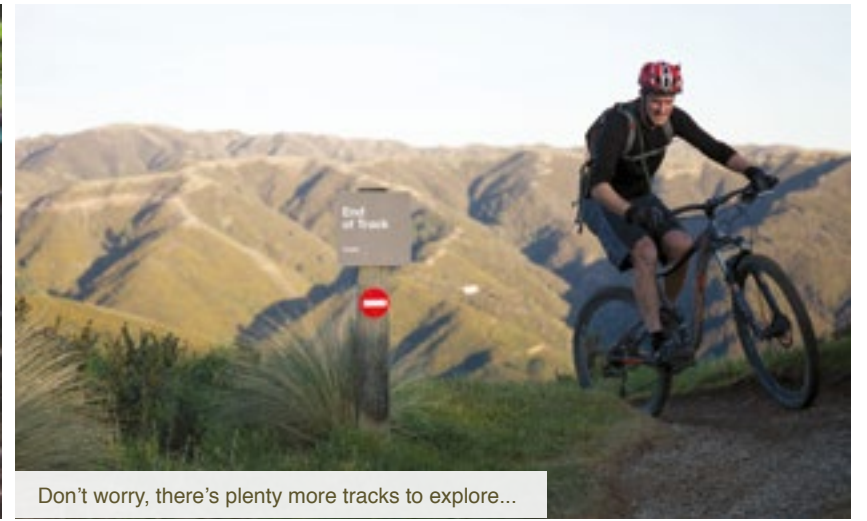
**Goat Enclosure** - Around the turn of the century we built two fenced off areas to exclude goats, pigs and feral livestock. This protects a range of slow growing planted trees so they can mature and provide sources of seed for dispersal throughout the park. In July this year we built a third enclosure at the bottom of Leaping Lizard. We've planted a range of trees within the new 15m by 20m enclosure fence including: rimu, totara, kaikōmako.







All hands on deck at Makara Peak



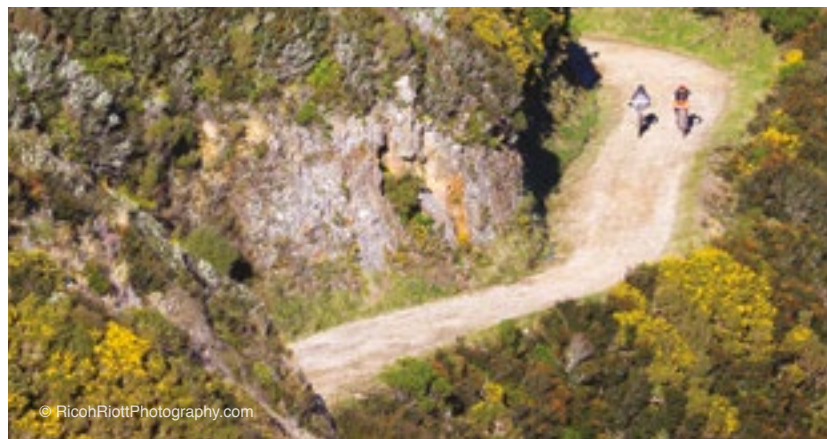
Don't worry, there's plenty more tracks to explore...



Trails worldwide!



Trails worldwide!



© RicohRiottPhotography.com



Creak to Peak race action



# Thanks from the Makara Peak Supporters Committee

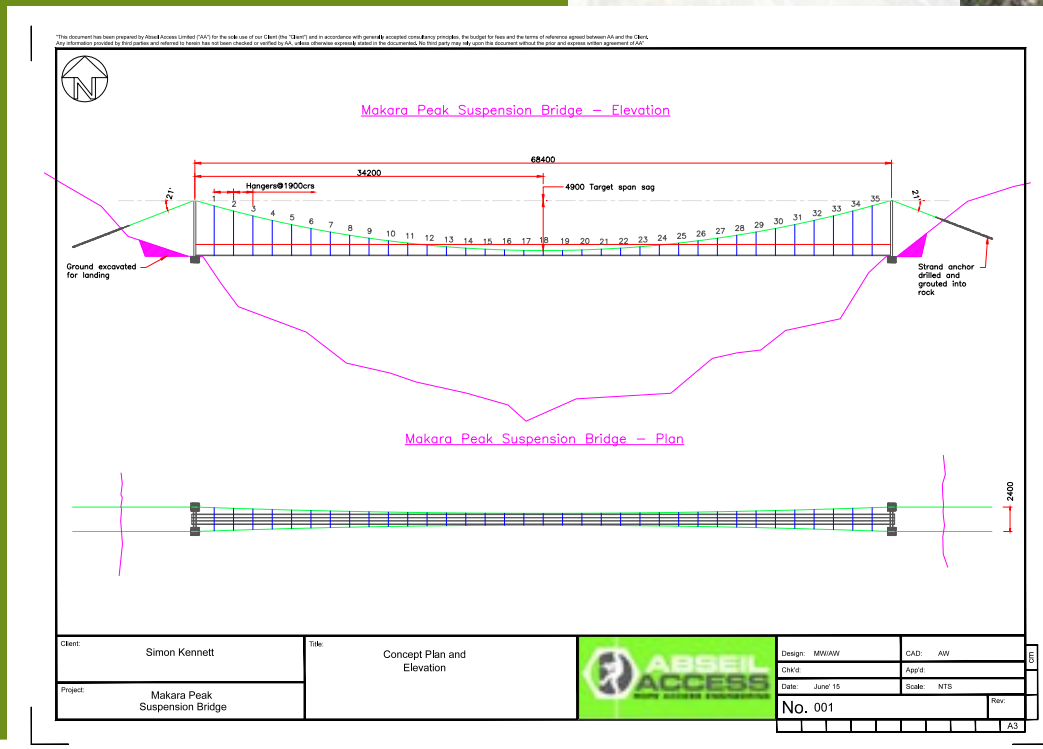
It certainly has been a big year at Makara Peak: we've built several new tracks, established new conservation projects and have done a lot of ongoing maintenance to keep the tracks to a very high standard. We have a very strong committee and have developed a wider support group of very active volunteers with some new fantastic people, and continued to develop a very strong partnership with Wellington City Council.

The Wellington City Council increased their funding support to Makara Peak in the 2013/14 financial year, and the indications are that this level of core funding will continue - with further funding for specific projects, such as the construction of Peak Flow and the Living City grants for tools and weed control around the carpark area.

## Tracks Plan

We presented a draft Tracks Plan at the AGM in 2014, and we've already built a couple of new tracks from the plan: Peak Flow and Three Brothers (first section). The Plan also outlines an 'easy up' track that will provide an easier single track to the summit, climbing steadily from the first part of Three Brothers (first section) to the mid-point on Aratihi.

This will involve some very gnarly terrain, so we are planning to build a 68m suspension bridge to bypass the most rugged gully (at a cost of \$100,000) and cut 1.1km of new track through rocky ground. It's a big project to embark on, but the bridge will be a fantastic icon and the track is likely to become the most popular route to the summit. This 'Easy Up' project has lots of support, including a private pledge of \$45,000 and permission from Wellington City Council (subject to Makara Peak Supporters securing full funding for the project). Stay tuned for a number of fundraising efforts. We will start building once we have the funds raised and the Three Brothers track is complete. All going to plan, this epic build will be ready to ride sometime in 2018.



Since the development of the Tracks Plan last year, Wellington City Council and the Makara Peak Supporters Committee have started to look at broader strategic planning for mountain biking in the region and will be consulting widely about what this could look like in 10-20 years time. One of the key challenges is sustainability, the more new tracks we build the more there is to maintain.

But in the meantime, we're obviously doing something right because we've (nearly) won a few awards this year, as Makara Peak Mountain Bike Park was named finalists at the Wellington Airport Regional Community Awards 2014 in the Sports and Leisure category. We were also finalist in the Bikewise 'Favourite Place to Ride' category in February. Our very own committee member Iain Feist won his workplace CLANZ-AUT Law School Community Contribution Awards. And, most importantly, the park is buzzing with happy people, seemingly more than ever before!

Thanks to our contractors – particularly Thomas Lindup and Jon Rosemergy for all their hard work over the last year. We'd also like to thank our members and volunteers for all of their contributions to the park – and for coming out to enjoy it.

Enjoy the ride!

## The Committee

- Jo Boyle (Tracks Leader)
- Ricky Pincott (Tracks)
- Iain Bramwell (Wayfinding)
- Evan McCarney (Conservation Leader)
- Sarah Bramwell (Tracks and Conservation)
- Anke Hoffman (Volunteers and Committee support)
- Annemarie Jutel (Philanthropy)
- Jamie Stewart (Chair)
- Simon Kennett (Vice Chair)
- Dave Nendick (Secretary)
- Oliver Martin (Treasurer)
- Iain Feist (Communications)





**Makara Peak Mountain Bike Park Supporters Incorporated**

Income Statement for the period ended 30 June 2015				Balance Sheet as at 30 June 2014				
Income	30 June 2015	30 June 2014				30 June 2015	30 June 2014	
Interest Income	\$950	\$1,387		Assets				
Other Revenue	\$250	\$0		Bank		\$4,666	\$6,162	
Subs	\$5,832	\$4,943		Term Deposit		\$30,000	\$33,502	
Donations	\$16,553	\$7,070		Receivables		\$0	\$1,973	
Events	\$3,583	\$6,249		Accumulated Depreciation		-\$5,549	-\$4,200	
Grants	\$27,548	\$84,847		Fixed Assets		\$20,955	\$12,750	
Sponsorship	\$1,000	\$0		Total Assets		\$50,073	\$50,187	
Total Income	\$55,717	\$104,496		Liabilities				
				Payables		\$425	\$61	
				Grants		\$6,548	\$5,412	
				Total Liabilities		\$6,548	\$5,473	
Less Operating Expenses								
Conservation and Pest Control	\$7,272	\$7,542						
Contractors	\$30,173	\$64,736		Net Assets		\$43,524	\$44,714	
Depreciation	\$3,049	\$0						
Food and Beverage / Work Party	\$2,292	\$1,383		Members Funds				
General Expenses	\$359	\$114		Opening Members Funds		\$53,364	\$39,259	
Printing & Stationery	\$18	\$0		Plus Net Income		\$7,016	\$14,105	
Repairs and Maintenance	\$5,031	\$15,880		Closing Members Funds		\$60,380	\$53,364	
Telephone & Internet	\$507	\$736						
Total Operating Expenses	\$48,701	\$90,391						
Net Income	\$7,016	\$14,105						





# Makara Peak Mountain Bike Park

Local Authority  
Wellington City Council  
Makara Peak  
Mt Cook Road

## Tracks

### Easy

201	Kay	2.8km
202	Edge Capital	3.8km
203	Leafy Fern	3.8km
204	Irony Trail	3.7km
205	Big South Peaks	3.2km
206	Car Park Stream	3.2km

### Intermediate

207	Kay Bypass	3.2km
208	Long Drive	3.8km
209	Goat Alley	3.8km
210	Winding Lark	3.8km
211	Aspen	2.7km
212	Upper Leaning Tower	3.8km
213	Staircase	3.8km
214	Staircase	3.8km
215	Aspen	3.4km
216	Aspen	3.4km
217	Aspen	3.2km
218	Aspen	3.2km
219	Aspen	3.2km
220	Aspen	3.2km
221	Aspen	3.2km
222	Aspen	3.2km
223	Aspen	3.2km
224	Aspen	3.2km
225	Aspen	3.2km
226	Aspen	3.2km
227	Aspen	3.2km
228	Aspen	3.2km
229	Aspen	3.2km
230	Aspen	3.2km

### Advanced

401	Leaping Lizard	2.4km
402	Cl	1.5km
403	Frontal Bar Line	1.5km
404	Rocky Drive	1.5km
405	Red Out	1.7km

### Expert

501	Polypipe	1.8km
502	Steeple Falls	1.8km
503	Wings	1.5km

### 4WD

701	Southern Chalmers	4.6km
702	Geopline Connector	3.4km
703	Aspen Connector	3.4km
704	Stair 18 Connector	3.1km
705	Stair 18 Connector	3.1km
706	Stair 18 Connector	3.1km

### Nearby

801	Kapiti Peak Freeride Area	1.0km
802	Ohakura Blue Circuit	10.7km
803	Styren	10.7km
804	Styren	10.7km
805	Styren	10.7km
806	Styren	10.7km
807	Styren	10.7km
808	Styren	10.7km
809	Styren	10.7km
810	Styren	10.7km
811	Styren	10.7km
812	Styren	10.7km
813	Styren	10.7km
814	Styren	10.7km
815	Styren	10.7km
816	Styren	10.7km
817	Styren	10.7km
818	Styren	10.7km
819	Styren	10.7km
820	Styren	10.7km

### Legend

○	Ascent entrance
○	Feature
○	Feature advice zones
○	Location
○	Point of View
○	Trail
○	Water construction
○	Track direction (one-way/two-way)

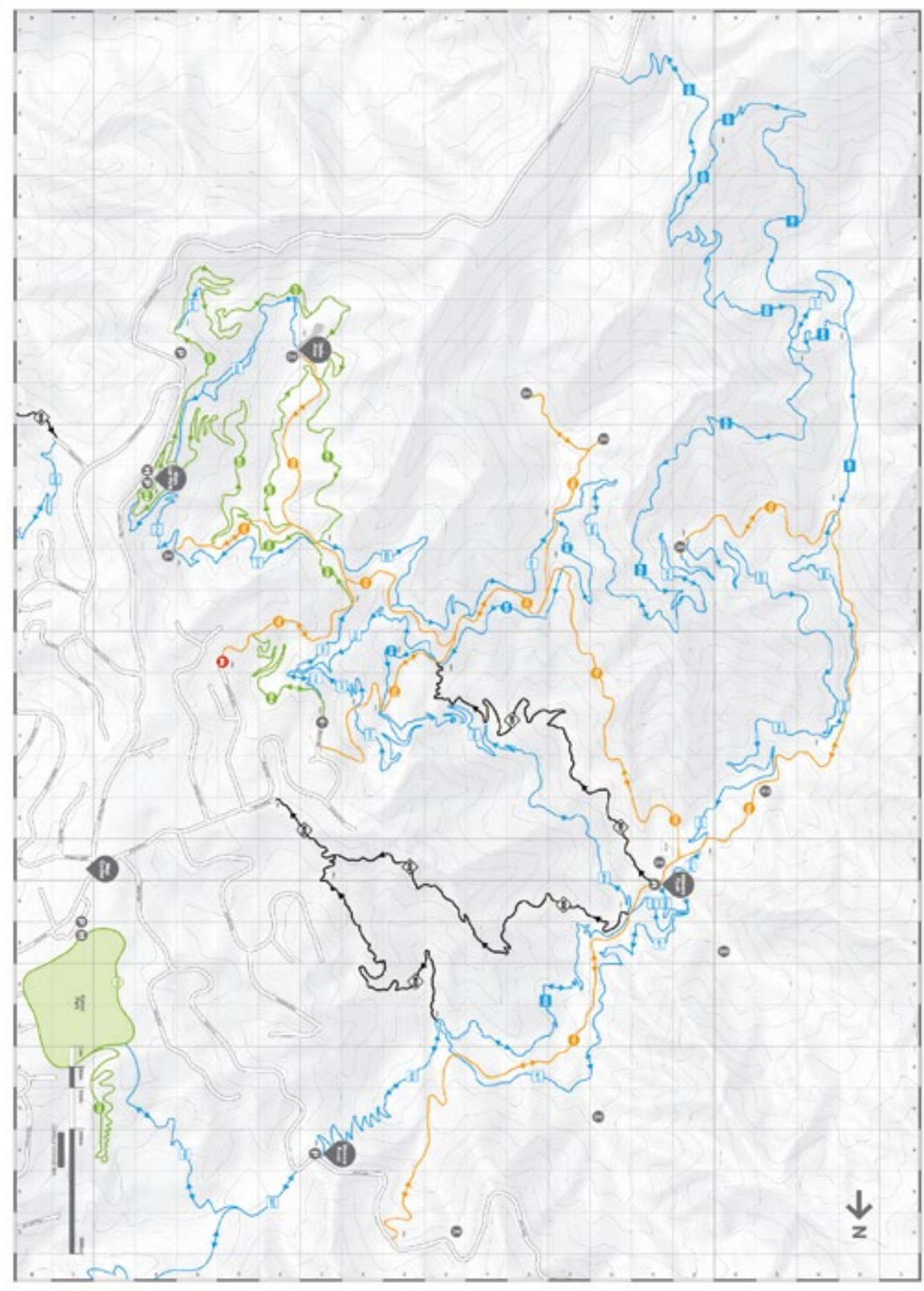


PHOTO: © RicoHFlottPhotography.com



---

# Thanks to all of our supporters

## Corporate Groups

**BNZ**

**Chorus**

**Lexus Nexus**

**Westpac**

**NZX**

**Greater Wellington Regional Council**

## Donations

**Johnston Foundation**

## Grants

**Wellington City Council**

**WWF**

**Meridian Westwind Community Fund**

**NZCT**

**Trail Fund**

## Sponsors

**Brendon Motors Karori**

**Infinity Foundation**

**Hells Pizza**

Design

[www.visualsby.me](http://www.visualsby.me)

[www.makarapeak.org.nz](http://www.makarapeak.org.nz)

Facebook: **Makara Peak MTB Supporters**

Instagram: **#MakaraPeak**